

# Innovate UK update

**Kathryn Miller**  
**Innovation Lead – Food**

## Innovate UK

# Innovate UK – the UK's innovation agency

Innovate UK drives **productivity and growth** by supporting businesses to realise the potential of new technologies, develop ideas and **make them a commercial success**.

To **stay competitive as an advanced economy**, we need to do things that others cannot do, or to do things in different and better ways.



Investment of  
**£2.2bn**

since 2007



industry match  
funding taking  
the total value  
of projects above

**£3.75bn**



Up to  
**£16bn**

in added value  
to the economy



up to

**£7.30**

for every £1  
we've invested.



We've funded around

**11,000**

projects



**8,000**

unique  
organisations  
involved

**8 jobs**

for each  
organisation  
involved

**70,000**

jobs created in total





# Sector focus to accelerate growth

## Emerging and Enabling Technologies

Identifying and investing in technologies and capabilities that will lead to the new products, processes and services of tomorrow



## Health and Life Sciences

Focused on agriculture and food and healthcare, underpinned by bioscience and medical research and enabled by engineering and physical sciences



## Infrastructure Systems

Optimising transport and energy systems and integrating them with other systems such as health and digital



## Manufacturing and Materials

Advancing manufacturing readiness so R&D and technology developments increase productivity and capture value in the UK





World population  
9.7 billion  
by 2050

1/3 of babies born  
today in the UK will  
live to 100 years



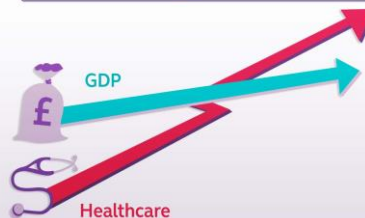
60% more food  
needed by 2050



2016

2050

Healthcare spend is rising  
faster than growth in GDP

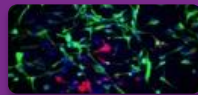


# Health and Life Sciences – Priority themes

## Bioeconomy



Precision and Discovery  
Medicine



Advanced Therapies



Improving agricultural  
productivity



Enhancing food quality

# Themes related to food



- **Increasing agricultural productivity:**
  - advanced and precision engineering
  - fighting agro-chemical and antimicrobial resistance
  - enhancing resilience to biotic and abiotic stress
  - individualised livestock/aquaculture nutrition and health
  - novel genetics and breeding
- **Improved food quality and sustainability**
  - authenticity and traceability
  - enhanced nutritional value
  - food safety
  - modern methods of food manufacturing
  - new and smarter ingredients
  - protein development
  - smarter packaging

## Current competitions

- Health & Life Sciences sector competition
  - £9.5m available
  - Opened 22 January 2018
  - Closes 28 March 2018 noon
- 'Open' calls:
  - December call
    - £19m available
    - Opened 11 December 2017
    - Closes 28 February 2018
  - March Open call
    - £15m available
    - Opens 1 March
    - Closes 9 May 2018 noon



Full details at  
[www.gov.uk/innovateuk](http://www.gov.uk/innovateuk)

# Transforming Food Production

- Announced last week
- new £90 million investment
- to bring together AI, robotics and earth observation to improve supply chain resilience in the agri-food sector



# Food Industry Innovation 2018

Wednesday 7<sup>th</sup> March

Museum of Science and Industry, Manchester



Supporting UK  
innovative businesses  
today in developing the  
industries of tomorrow

We can't stop  
thinking about  
the future

**Innovate UK**



## Investing in science, research and innovation

*We must become a more innovative economy and do more to commercialise our world leading science base to drive growth across the UK*

### Industrial Strategy Challenge Fund

- Industry-led and powered by multi-disciplinary research and business academic collaboration
- Develop UK industries that are fit for the future, driving progress in technologies where the UK can become a world-leader in research and commercialisation

# Industrial Strategy Challenge Fund



Medicines manufacturing technologies



Batteries for clean and flexible energy storage



Manufacturing and materials of the future



Robots for a safer world



Self-driving vehicles



Satellites and space technology

# ISCF Wave 2 Challenges



- Early Diagnosis and Precision Medicine
- Healthy Ageing
- Mental Health
- Energy Revolution
- Transforming Construction
- Transforming Food Production: From Farm to Fork
- Next Generation Services
- Audience of the Future
- Quantum Technology
- Space Data
- Digital Manufacturing



# ISCF Wave 2 Challenges



- Early Diagnosis and Precision Medicine
- Healthy Ageing
- Mental Health
- Energy Revolution
- Transforming Construction
- Transforming Food Production: From Farm to Fork
- Next Generation Services
- Audience of the Future
- Quantum Technology
- Space Data
- Digital Manufacturing

