

Update STFC

Katharine Hollinshead

21st Century Challenges Programme Manager

**NUCLEAR
SECURITY
NETWORK
MEETING**

**STFC RCUK
INNOVATION
FELLOWSHIPS**

**CLASP
HEALTHCARE
CALL**

**GCRF
ENGAGEMENT
EVENT @ RAL**

**STFC NEWTON
THAILAND**

18 Sep

25 Sep

2 Oct

9 Oct

16 Oct

23 Oct

30 Oct

6 Nov

13 Nov

**ADVANCED
RADIOTHERAPY
NETWORK+
MEETING**

INDUSTRIAL CASE

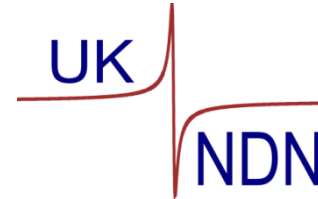
**RSE ENTERPRISE
FELLOWSHIPS**

**GCRF
INTERDISCIPLINARY
RESEARCH HUB
CALL**

21st Century Challenges Networks

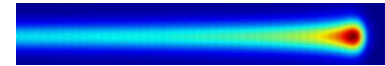
- UK Nuclear Data Network

<http://www.ukndn.ac.uk/>



- Advanced Radiotherapy Network

<https://www.advanced-radiotherapy.ac.uk/>



- Environment Radioactivity Network

<http://www.envradnet.co.uk/>



- Network in Battery Science and Technology

<http://stfcbatteries.org/>



- Nuclear Security Network

<http://www.nusec.uk/>



STFC RCUK Innovation Fellowships

- Closes 4th October, 10-12 three year projects
- Build programmes of innovation and translation from research within the STFC core programme remit
- Ideally cross disciplines, particularly across the research councils, and be broadly aligned with the core themes, challenges and opportunities highlighted in the [Industrial Strategy Green Paper](#)
- Proposals may be submitted by any UK university(ies) or independent research organisation eligible for STFC grant funding
- No need to name the fellow that would be appointed, although a specific individual may be specified if this is known

- <http://www.stfc.ac.uk/funding/fellowships/stfc-rcuk-innovation-fellowships/>



Industrial CASE & Industrial CASE Plus Studentships

- Close 5th October
- Industrial CASE: Support for 3.5 year PhD project to work in collaboration with a non-academic partners – required to spend a period on the premises of the partner
- Industrial CASE Plus: spends a further year working full-time on the premises of the non-academic partner as an employee – STFC will contribute 50% of the salary
- <http://www.stfc.ac.uk/funding/studentships/industrial-case-studentships/>

GCRF Engagement Events

Location	Date	Further information
University of St Andrews	26 September 2017	Contact rpo@st-andrews.ac.uk
University of Manchester	29 September 2017	Link to registration
SOAS, University of London	22 September 2017	Link to registration
University of Leeds	19 September 2017	Link to registration
Leicester	14 September 2017	Link to registration
University of Essex	16 October 2017	Link to registration
Rutherford Appleton Laboratory	11 October 2017	Link to registration
University of Exeter	4 October 2017	Link to registration
Swansea University	13 October 2017	Link to registration

<http://www.rcuk.ac.uk/funding/gcrf/interdisciplinary-research-hubs-to-address-intractable-challenges/>

GCRF Interdisciplinary Research Hubs to Address Intractable Challenges Faced by Developing Countries

- Intention to Submit survey by 29th September
- Outline proposals by 9th November
- Challenge-led and impact-focused GCRF Interdisciplinary Research Hubs
- Between £8M - £20M (full economic cost) will be available for each Hub, provided over a 5 year period
- Anticipate awarding 12-15 Hubs.

Industrial Strategy Challenge Fund

- Wave 1: announced April over £1bn over next 4 years
 - healthcare and medicine
 - robotics and artificial intelligence
 - batteries for clean and flexible energy storage
 - self-driving vehicles
 - manufacturing and materials of the future
 - satellites and space technology
- Wave 2
- Wave 3?

Sources of information

- Industrial Strategy Challenge Fund: Wave 1 calls: healthcare and medicine; robotics and artificial intelligence; batteries for clean and flexible energy storage; self-driving vehicles; manufacturing and materials of the future; satellites and space technology:

<https://www.gov.uk/government/collections/industrial-strategy-challenge-fund-joint-research-and-innovation#competitions>

- Global Challenge Research Fund calls:

<http://www.rcuk.ac.uk/funding/gcrf/>

- Newton Fund: <http://www.rcuk.ac.uk/international/newton/>