



Science & Technology
Facilities Council

Food Network+



Sarah Bridle

University of Manchester

PI of the STFC Food Network+

Temporary logo - new logo to be chosen
by you during drinks this evening!



Science & Technology
Facilities Council
Food Network+



Sarah Bridle

University of Manchester

PI of the STFC Food Network+



My motivation

- 20 years as a cosmologist, analysing images of millions of galaxies to learn about dark matter and dark energy, but...
- (Hopefully) the biggest challenge facing civilization is climate change and its impact on food security
- Food production is (arguably?) the biggest “single” contributor to climate change
- The STFC Food Network+ offers a way for people like me to get involved and use our STFC capabilities to help solve these problems



Objectives of the SFN

- To build an inclusive, dynamic, **interdisciplinary network** of researchers focused on innovative ways to use the skills and facilities funded by STFC.
- To **kickstart inter-disciplinary collaborations** and research projects working towards safe sustainable food systems both in the UK and developing countries.
- To enhance the impact of STFC/food multidisciplinary collaborations by encouraging **codesign with the non academic sector**.

SFN Co-Investigators



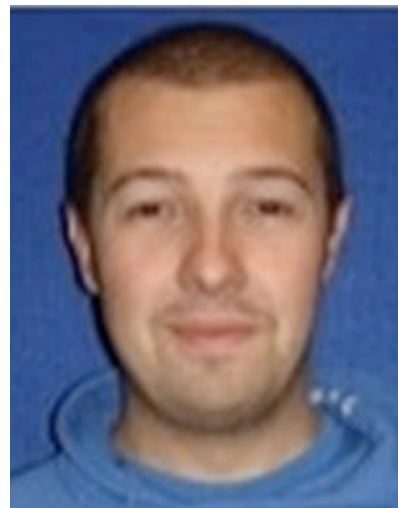
Science & Technology
Facilities Council
Food Network+



Sarah Bridle (PI)
Manchester, astronomy



Katherine Denby
York, plant systems biology



Kieran Flanagan
Manchester, nuclear, spectrometry



Bruce Grieve
Manchester, agrifood sensors



Jason Halford
Liverpool, psychobiology, obesity



Lenny Koh
Sheffield, supply chain



Mark Reed
Newcastle, impact, ecosystem services



Alison Fletcher
(Project Manager)

SFN Steering Committee



Science & Technology
Facilities Council
Food Network+



Alastair Taylor (Chair)
CEO IAgre



Peter Allan
Head of Strategy, RAL
Soace



Peter Atkinson
Lancaster University



Myles Bremner
Consultant to Jamie Oliver
Foundation



David Flanders
CEO Agrimetrics Centre



Peter Lee
Acting Director, Research
Complex at Harwell



Hywel Owen
University of Manchester



Robin Pinning
Chief Technology Officer,
Hartree



Ernesto Santibanez
Gonzalez
UFSB, Brazil; Talca, Chile



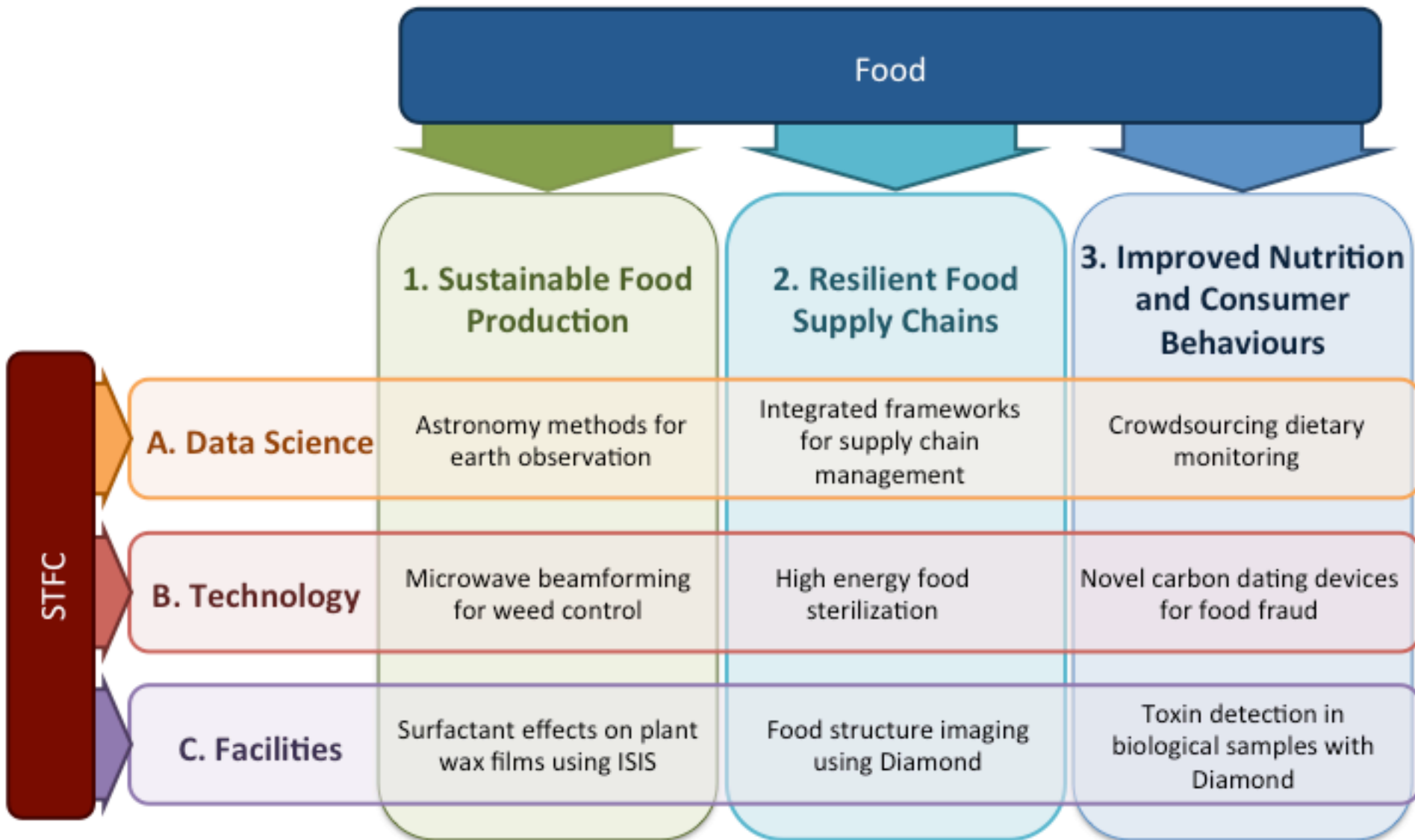
Stefan Seuring
University of Kassel,
Germany



Tim Williams
Project Coordinator,
Farming Futures



The Intersections





What would “success” look like?

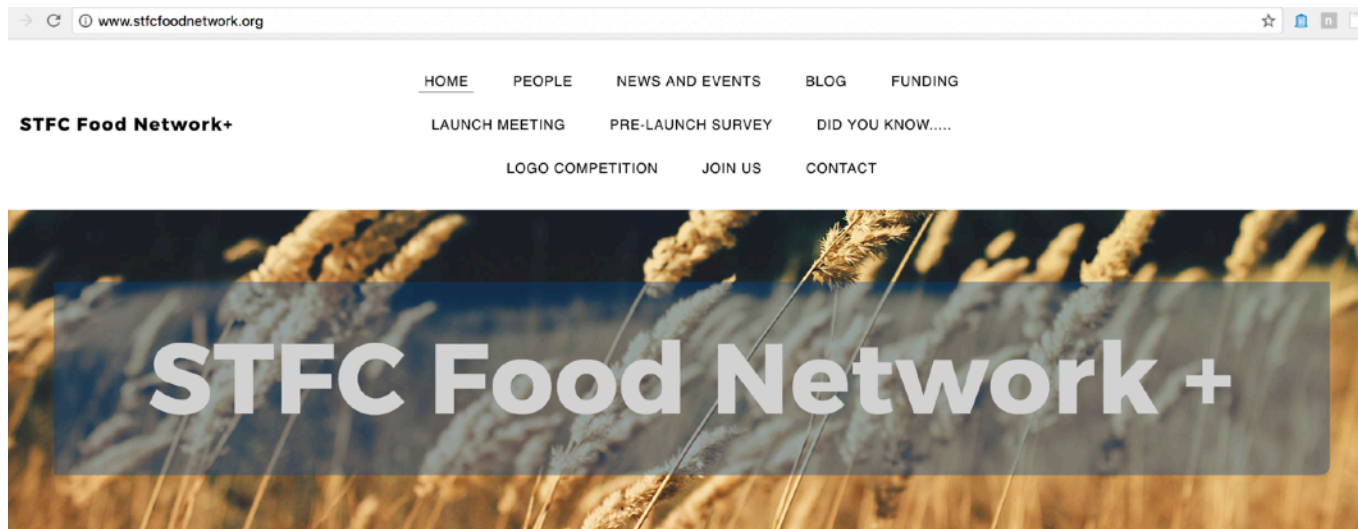
“For us, a successful SFN would have

- instigated **multiple new projects** between STFC research and facilities and food research and industry, that would not have happened without the SFN.
- We would like the seed funding provided by the SFN to **enable these projects to become self-sustaining** beyond the SFN.
- We want the SFN to have **built cross-disciplinary communities** who understand the skill sets and challenges facing each other, and engage to solve agri-food problems"



Publicity

- Thank you very much indeed for all your entries to the logo competition. Voting on the best entries during drinks today!
- SFN website is now up and running! www.stfcfoodnetwork.org



Welcome to the STFC Food Network +

The Science and Technology Facilities Council (STFC) Food Network+ (SFN) aims to bring together STFC researchers and facilities with research and industry in the agri-food sector. The SFN will build an interdisciplinary community working to provide a sustainable, secure supply of safe,

Wednesday 28th June 2017

12:00	Lunch	
13:00	Geoff McBride	Why the STFC Food Network+?
13:05	Sarah Bridle	STFC Food Network+ Overview
13:10	Katherine Denby	Overview of Food Challenges
13:25	Mark Swainson	Innovation Challenges in the Food Supply Chain
13:40	John Bassett	Research Needs for a Future Food System
13:55	Tom Quested	Understanding Wasting Food in the Home – Untangling the Spaghetti
14:10	Aled Jones	Finance and Food Security
14:25	Discussion	
14:55	Tea / Coffee	
15:15	Clive Blacker	Sustainable Intensification
15:30	Breakouts with speakers and other experts	
	Peter Allan (Chair)	Sustainable Intensification
	Kieran Flanagan (Chair)	Supply Chain
	Dawn Geatches (Chair)	Consumer Choices
16:15	Seb Oliver	Data Science Skills from Astro/Particle/Nuclear Physics
16:25	Stephen Serjeant	Precision Technology from Astro/Particle/Nuclear physics
16:35	Sarah Rogers	Overview of STFC Facilities
16:45	Discussion	
17:00	Breakouts with speakers and other experts	
	Lenny Koh (Chair)	Data Science
	Bruce Grieve (Chair)	Precision Technology
	Stefan Seuring (Chair)	STFC Facilities
17:45	Chris Lintott	Zooniverse Showcase
17:55	Tim Williams (Chair)	Brainstorming SFN Activities Ideas via Postits
18:10	Discussion / Explanation of Drinks Reception Format	
18:15	Drinks Reception Speed Meeting	
19:00	Close	



SFN Launch Meeting agenda day #2

Thursday 29th June 2017

08:30	Tea / Coffee / Pastries / Informal Discussion	
09:00	Katharine Hollinshead	STFC and the Global Challenges Research Fund
09:10	Harriet Trewin	Agriculture and Food security research priorities
09:20	Ernesto Gonzalez	The International Landscape
09:30	Andy Shaw	Newton UK-China AgriTech programme
09:40	Simon Baty	The Innovate UK Knowledge Transfer Network
09:50	Mark Reed	The Impact Landscape
10:00	Alison Fletcher	Proposed STFC Food Network+ Activities
10:10	Discussion	
10:25	Tea / Coffee	
10:50	Sarah Bridle	SFN Factsheets Concept
11:00	SFN Factsheet Writing Breakouts	
12:00	Lunch	
13:00	Close	

Key: Green = food background Blue = STFC background



Updates about this meeting

- Christian Reynolds agreed to stand in for Katherine Denby
- Aled Jones's slides will be available
- Hashtag #SFNLaunch
 - do tweet about how its going
 - respect new ideas other people have
- Raj will be videoing some of you for the website



My goals for this meeting

- Create new connections between food and STFC people
- Brainstorm ideas for new projects
- Hear your ideas how the network can facilitate the above over the coming 3 years
- Get started writing factsheets

Most importantly:

- Learn about something new
- Enjoy spending 24h focussing on new possibilities