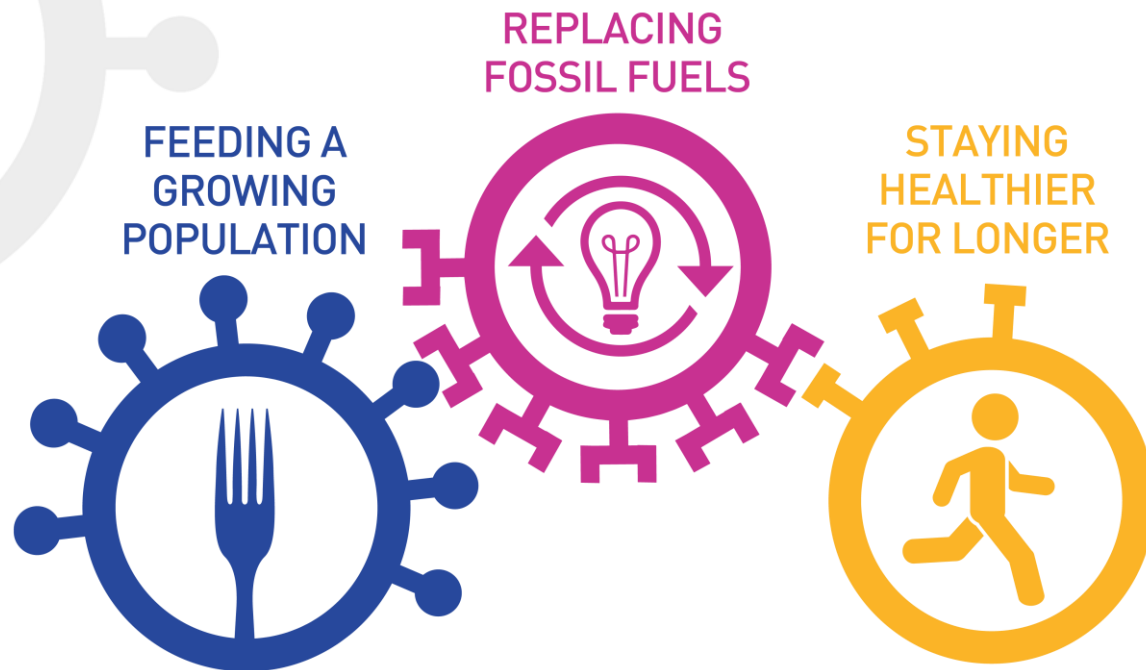


BBSRC – Enabling Collaboration

James Phillips, Senior Business Interaction Manager



MEETING SOCIETY'S CHALLENGES



The world needs to produce 50% more food by 2050

Food & agri sector in UK already worth £96Bn a year

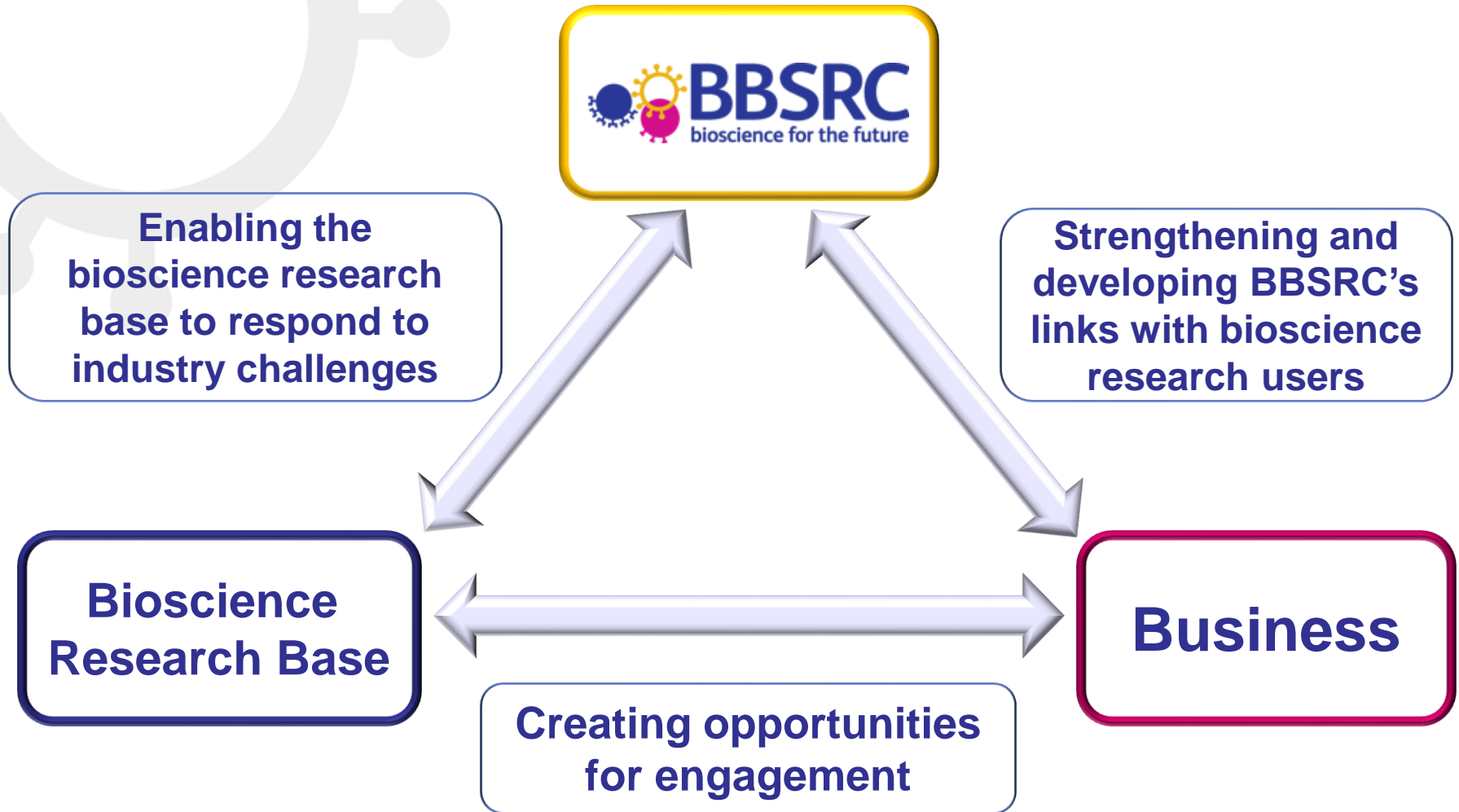
Need for low carbon alternatives to fossil fuels

Demand for energy predicted to grow by 20% in 2030 (from 2010)

21% of UK population will be aged 60+ by 2050

Tackling obesity would save wider UK economy £50bn per year by 2050

BBSRC working with businesses



BIU support for Agriculture and Food Security

Plants

Animals

Cereals

**Fresh
Produce**

Production

Livestock

Aquaculture

Pre-competitive Research

CIRC

Crop Improvement
Research Club

HAPI

Horticulture &
Potato Initiative

SARIC

Sustainable
Agriculture
Research
Innovation Club

ARC

Animal Health
Research Club

**Aquaculture
Initiative**

Collaborative Research

Industrial Partnership Awards & stand-alone LINK

Competitive Research

Partnerships with Innovate UK

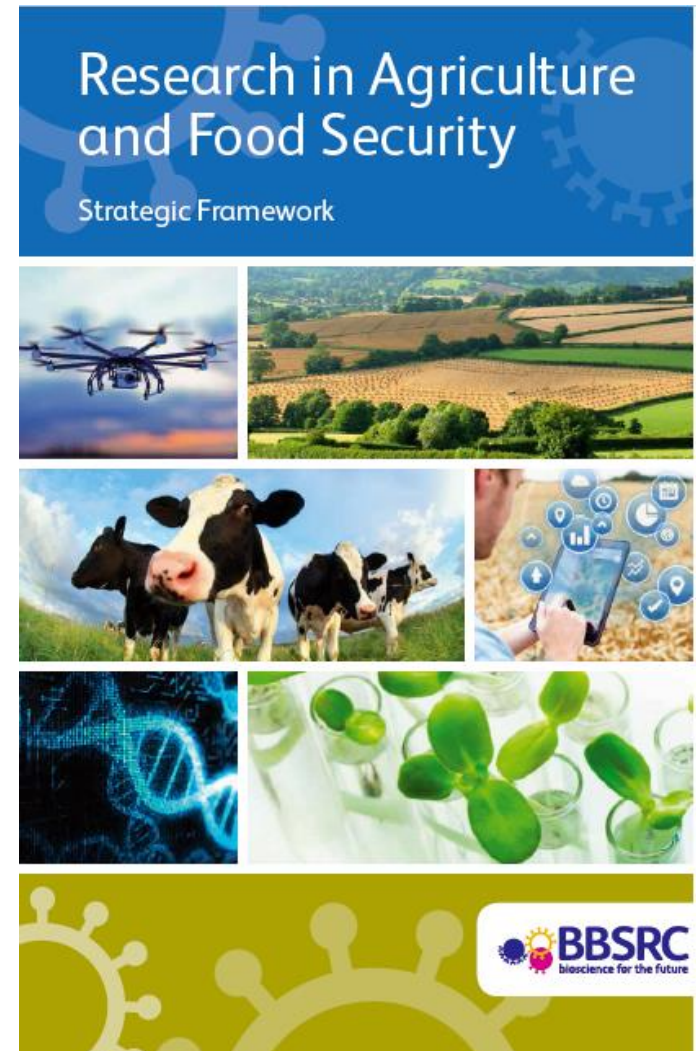
Agri-tech Catalyst & Centres

Sustainable Agri-Food Innovation Platform (SAF-IP)

BBSRC Agriculture and Food Security

- Strategic Framework

- The aim is to expand on, and provide further details of, BBSRC's strategic priorities in AFS.
- It identify areas where the BBSRC will **focus efforts** and expects to deliver the most impact

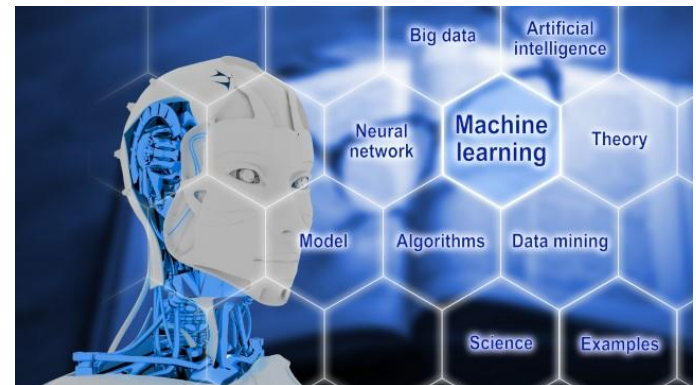


Precision agriculture and smart technologies

- Developing precision farming by **embedding smart engineering** technologies in agri-food research and innovation
- Supporting the development of digital and **predictive tools** to improve decision making
- Revolutionise future farming by developing and utilising **novel technologies**



monkeybusinessimages/iStock/Thinkstock©



BeeBright/iStock/Thinkstock©

UK Industrial Strategy

Transforming Food Production

- **£90M** of new funding to help businesses, researchers and industry to transform food production
- Bring together AI, robotics and earth observation to improve supply chain resilience in the agri-food sector
- Led by Innovate UK and BBSRC as part of ISCF

The fund will:

- create **translation hubs** that bring together businesses, farmers and academics to collaborate on research projects
- support **innovation accelerators** to explore the potential of new technology and speed up commercialisation
- launch a **new research programme** to identify and build on export opportunities overseas
- fund **demonstrator projects** that show how innovative agri-tech ideas can be applied in real-world settings

More details to follow

UK Industrial Strategy

Wave 3

Professor Sir Mark Walport, Chief Executive of UKRI, which is responsible for the ISCF said:

“Developing and effectively utilising the latest technologies and research methods will revolutionise the way we produce our food. Right across the agricultural sector, we can make the process more efficient, more productive and more sustainable to deliver benefits for growers, producers and consumers. This is precisely why the ISCF was created.

“We are now launching the process for businesses and researchers alike to come together to identify both pressing problems in food production and farming and opportunities that could benefit from the next wave of ISCF funding. **I want to strongly encourage everyone in the sector to respond to our call for expressions of interest.**”

Press release: 21 Feb 2018: <https://www.gov.uk/government/news/business-secretary-calls-for-new-tech-revolution-in-agriculture>

How can **you** engage with BBSRC?

Industry partners, high-risk high return ideas:

- LINK schemes (LINK) - 50% 'in kind' or cash
- Industry Partnership Awards (IPA) - 10% cash
- Collaborative awards together with Innovate UK
- Research and Innovation Campuses; Babraham, Norwich, Rothamsted, Easter Bush. Agri-metrics
- Skills supply - DTPs, CTPs, KTPs

www.bbsrc.ac.uk/business

Academic partners:

- Responsive and Managed mode grants

www.bbsrc.ac.uk/funding





Thank you

james.phillips@bbsrc.ac.uk

www.bbsrc.ac.uk/business

